



Elmer Gold Discovery

Eyou-Itschee James-Bay Region, Québec, Canada

PDAC - March 2021



Elmer Gold Discovery

Eyou-Itschee James-Bay Region, Québec, Canada

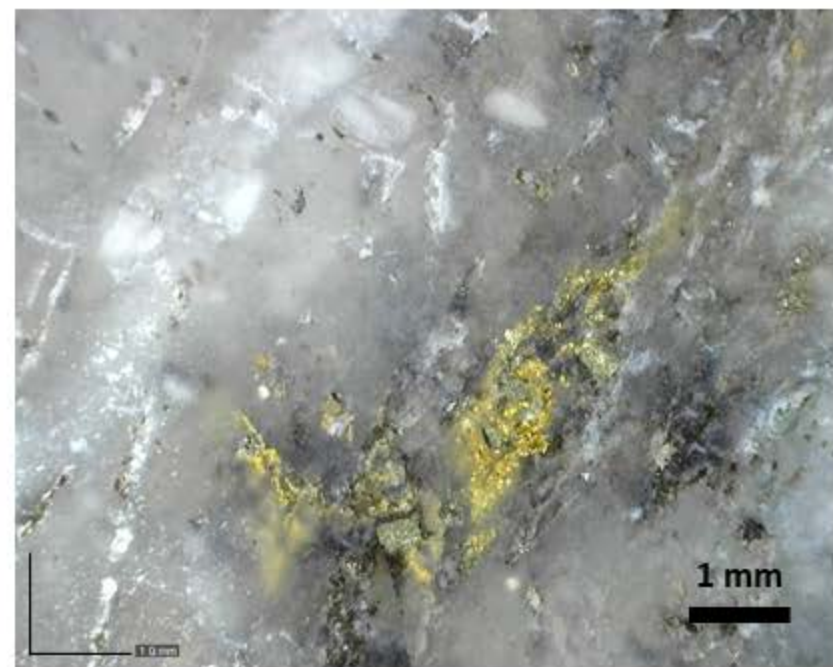
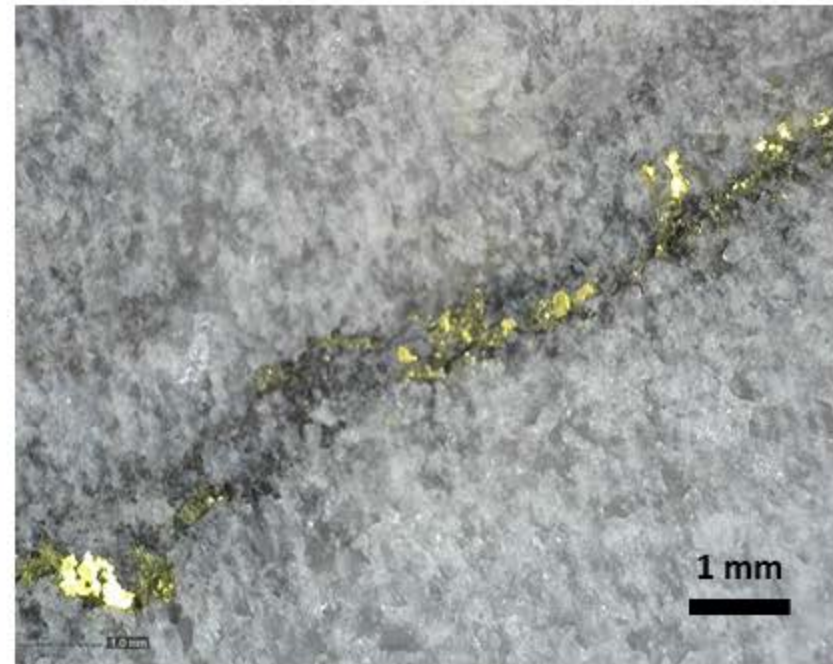
PDAC - March 2021



Elmer Gold Discovery

Eyou-Itschee James-Bay Region, Québec, Canada

PDAC - March 2021



- 1 – Elmer Geological Map – Patwon Area**
- 2 – Channel Sampling over the Discovery Outcrop**
- 3 – Selected Core Intersections from Elmer 2020 Drilling Program**

ELM20-011

3.66 g/t Au / 22.75m (50.35m to 61.00m) *including* **7.21 g/t Au / 10.65m** (50.35m to 61.00m)
2 slides: from 47m to 55m and 55m to 67m

ELM20-026

2.61 g/t Au / 72.15m (122.20m to 194.35m) *including* **29.24 g/t Au / 4.95m** (154.75m to 159.70m)
1 slide: 153m to 162m

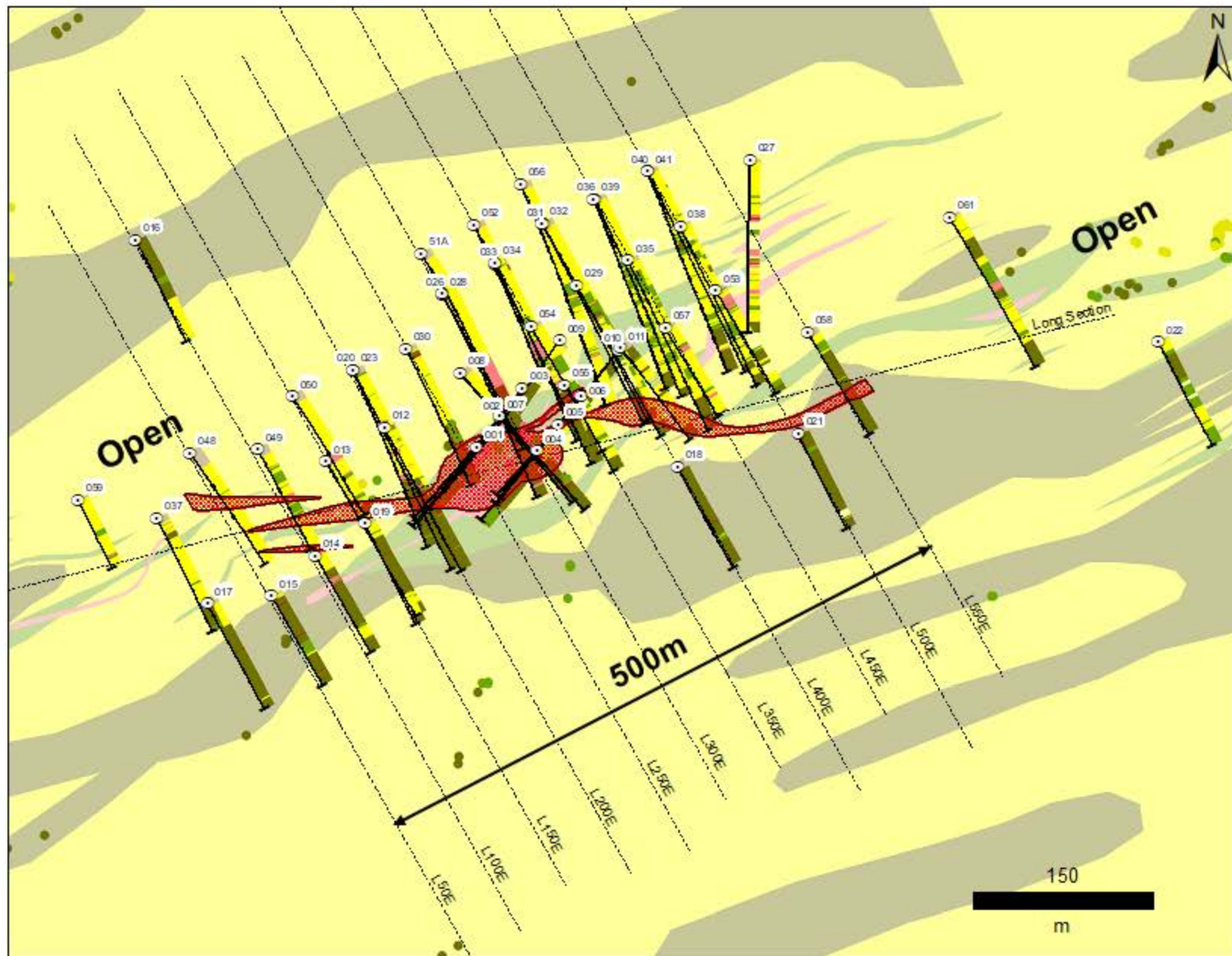
ELM20-028

1.44 g/t Au / 58.20m (156.30m to 214.50m) *including* **17.82 g/t Au / 2.00m** (158.80m to 160.80m)
2 slides: 158m to 167m, close up from 160.4m to 160.6m

ELM20-034

3.01 g/t Au / 90.20m (151.30m to 241.50m) *including* **10.99 g/t Au / 18.70m** (151.30m to 170.00m)
3 slides: 149m to 158m, 162m to 171m, 223m to 231m

1 – Elmer Geological Map – Patwon Area



- Completed Drillholes Collars
- Completed Holes Traces
- ▨ Surface Mineralization Projection along Dip
- Section

Surface Lithology Stations

- Intrusive
- Gabbro
- Volcanic Felsic
- Basalt

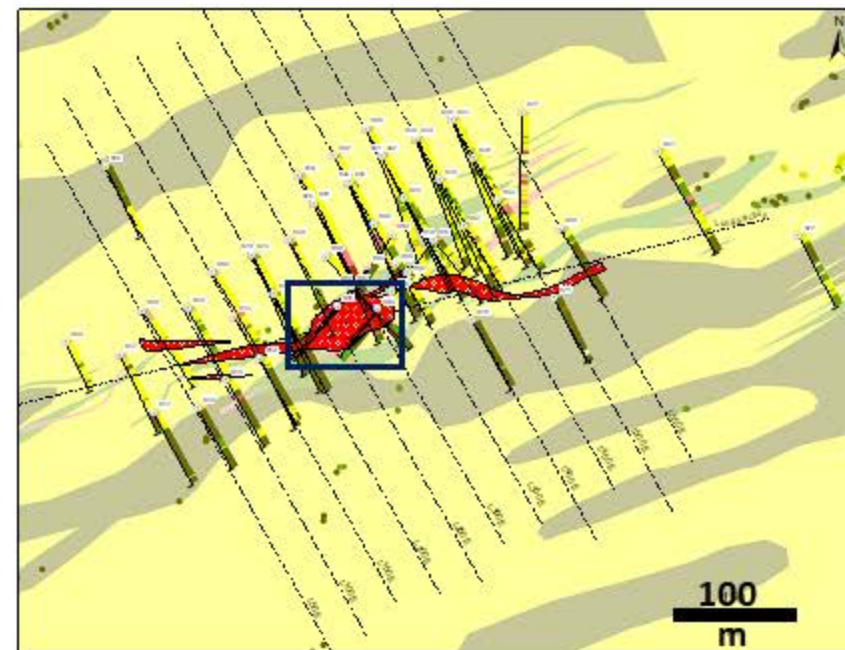
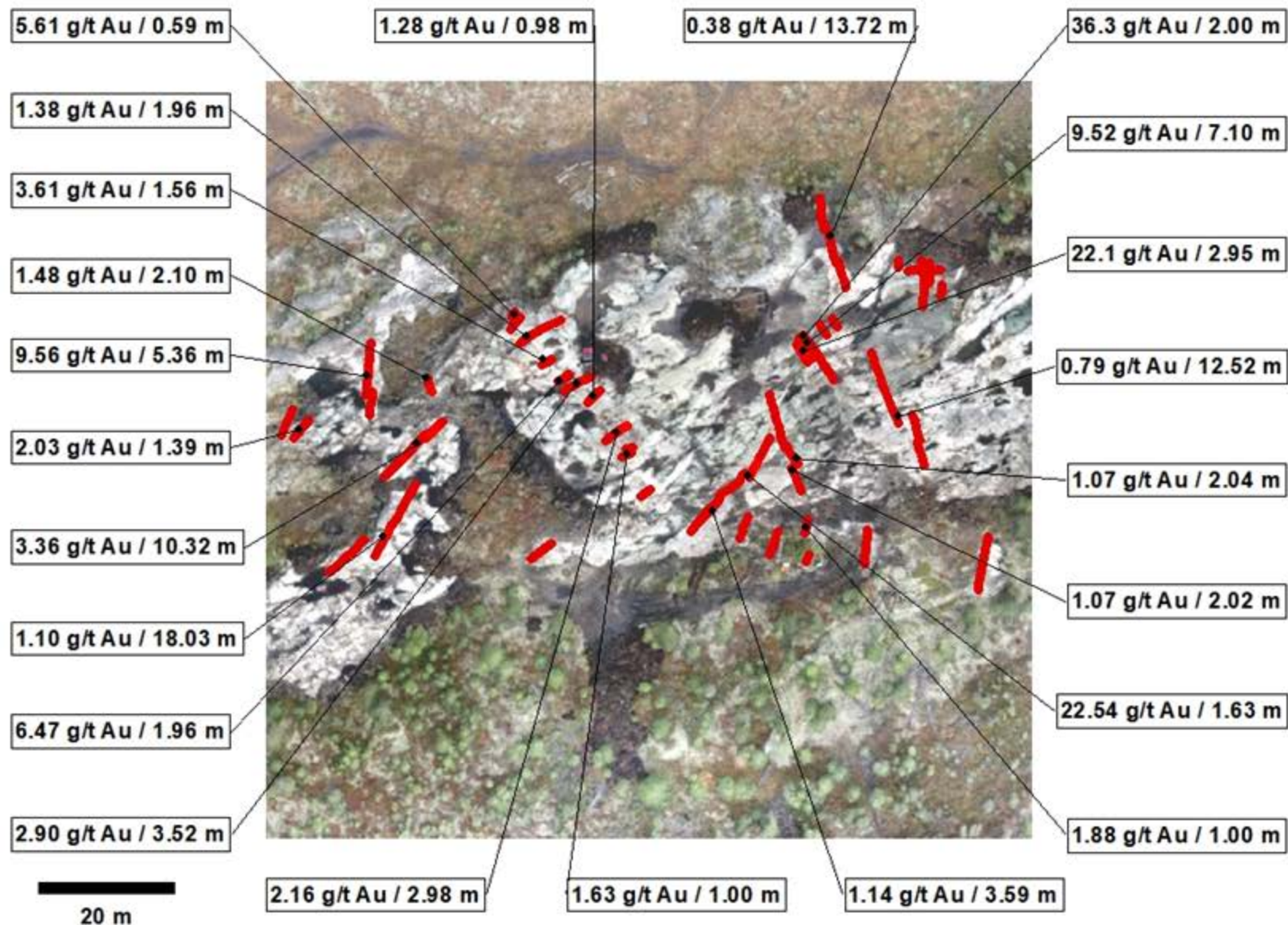
Downhole Lithology Surface Projection

- Overburden (OB)
- Felsic Intrusives (I1); Granodiorite (I1C)
- Intermediate intrusives (I2)
- Tectonic breccia (M26)
- Gabbro (I3A)
- Felsic lapilli tuf (V1tl); Felsic tuf (V1tu)
- Felsic volcanic (V1)
- Basalt (V3B); Mafic volcanic (V3)

Interpreted Lithology

- Felsic-Intermediate Intrusive
- Gabbro
- Felsic Volcanic
- Mafic unit

2 – Channel Sampling over the Discovery Outcrop

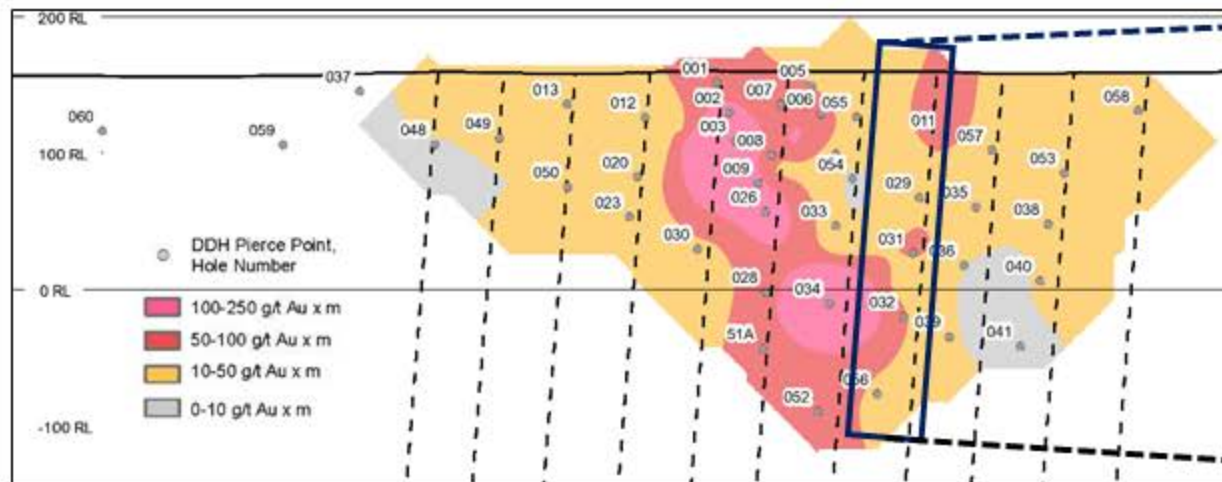
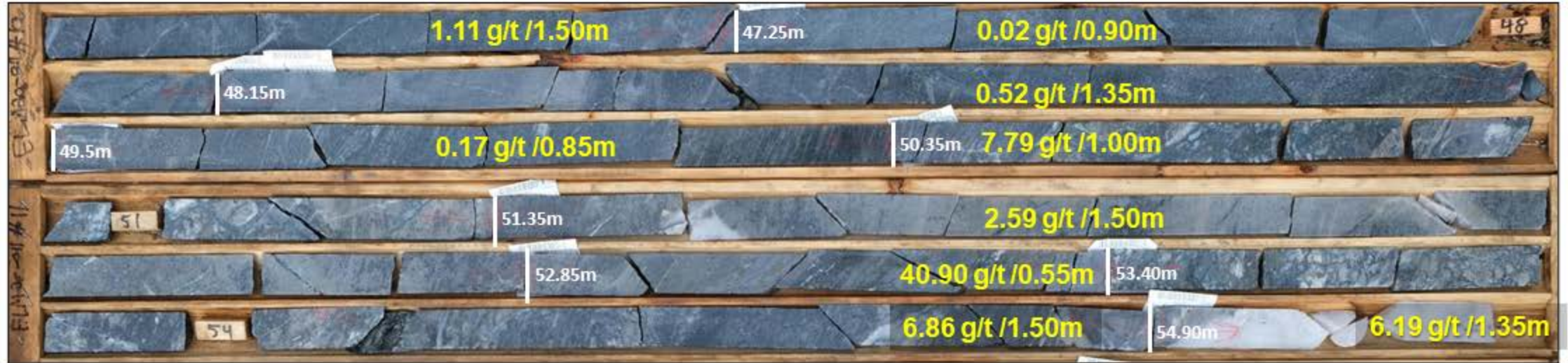


3 – Selected Core Intersections from Elmer 2020 Drilling Program



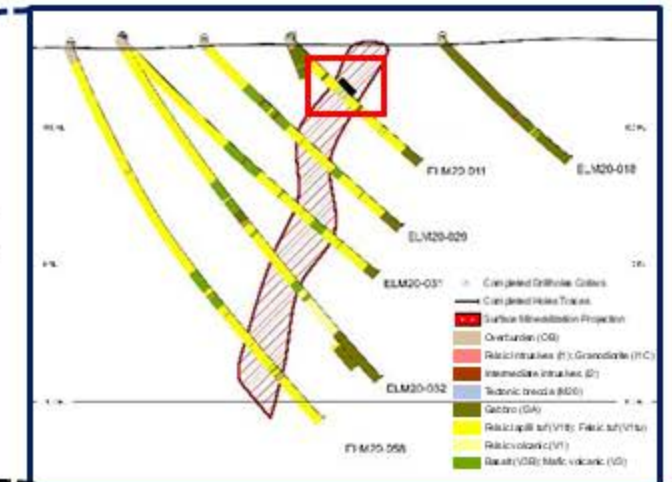
Hole **ELM20-011:**
1/2 (47m to 55m)

3.66 g/t Au / 22.75m (45.75m to 68.50m)
including 7.21 g/t Au / 10.65m (50.35m to 61.00m)



Patwon Discovery Longitudinal Section Looking ~NNW

The distance between two horizontal lines is 100m.

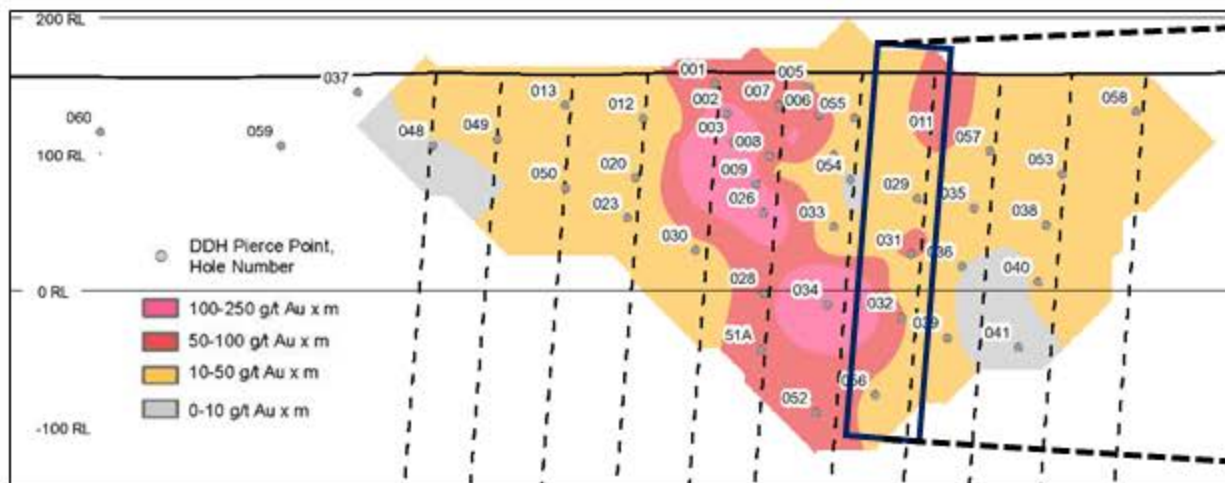
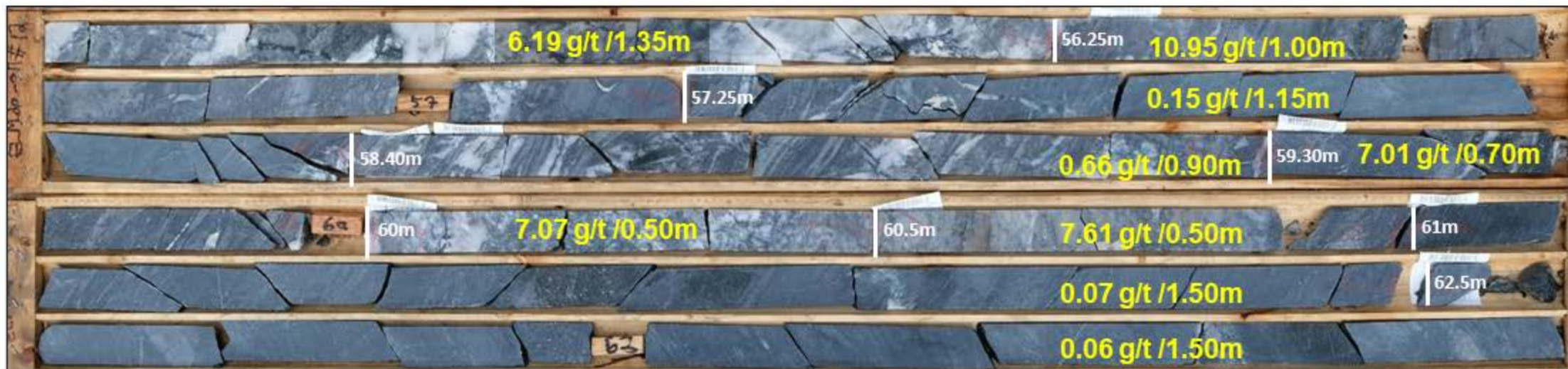


Patwon Cross Section Looking ~NE

3 – Selected Core Intersections from Elmer 2020 Drilling Program

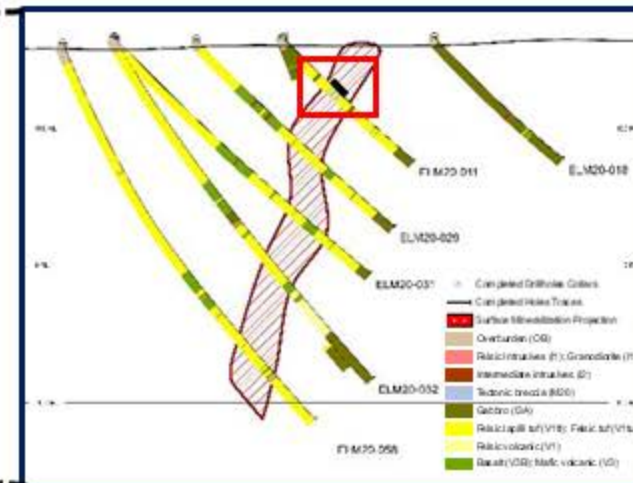


Hole **ELM20-011:** 7.21 g/t Au / 10.65m (50.35m to 61.00m)
2/2 (55m to 64m)



Patwon Discovery Longitudinal Section Looking ~NNW

The distance between two horizontal lines is 100m.

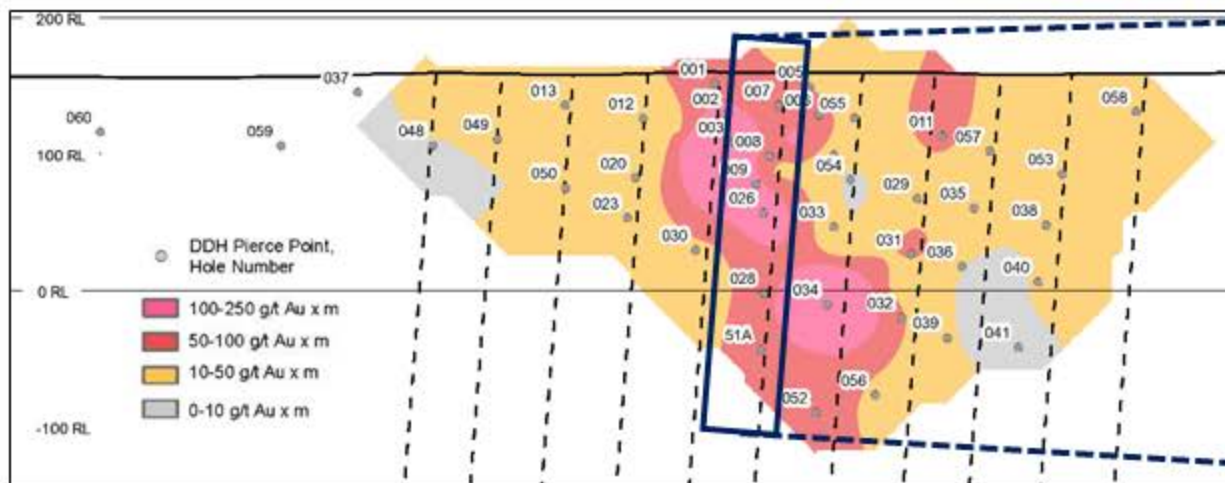
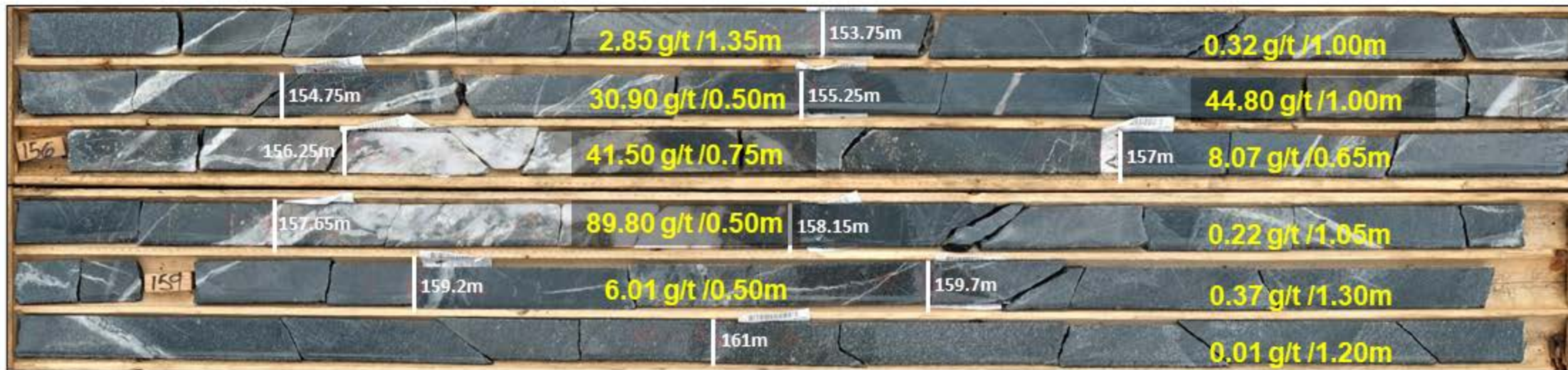


Patwon Cross Section Looking ~NE

3 – Selected Core Intersections from Elmer 2020 Drilling Program

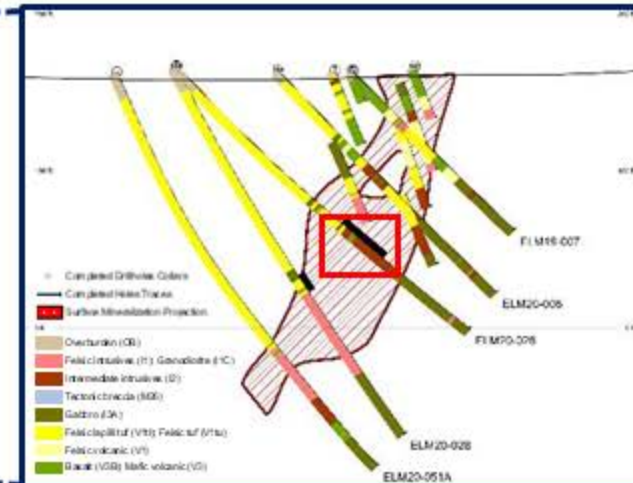
Hole **ELM20-026:**
1/1 (153m to 162m)

2.61 g/t Au / 72.15m (122.20m to 194.35m)
including 29.24 g/t Au / 4.95m (154.75m to 159.70m)



Patwon Discovery Longitudinal Section Looking ~NNW

The distance between two horizontal lines is 100m.



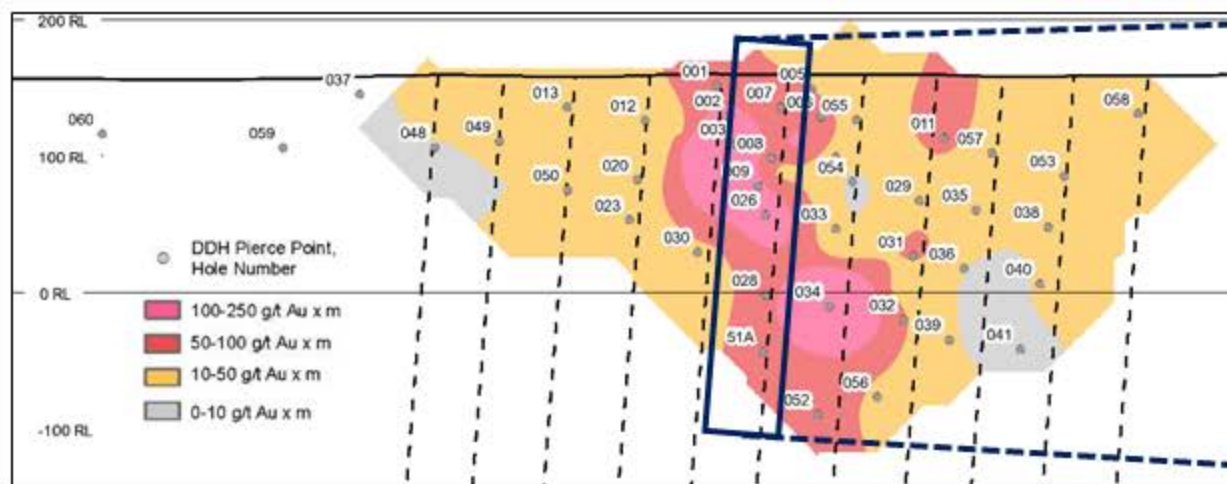
Patwon Cross Section Looking ~NE

3 – Selected Core Intersections from Elmer 2020 Drilling Program



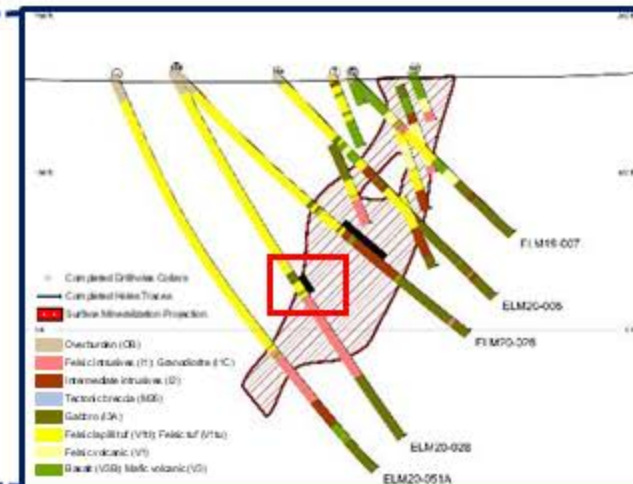
Hole **ELM20-028:**
1/1 (158m to 167m)

1.44 g/t Au / 58.20m (156.30m to 214.50m)
including 17.82 g/t Au / 2.00m (158.80m to 160.80m)



Patwon Discovery Longitudinal Section Looking ~NNW

The distance between two horizontal lines is 100m.

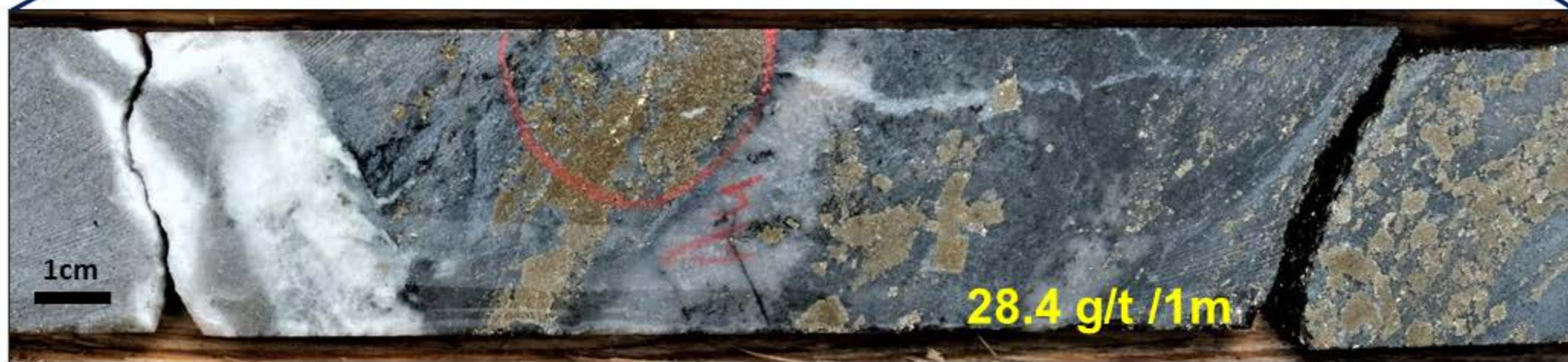
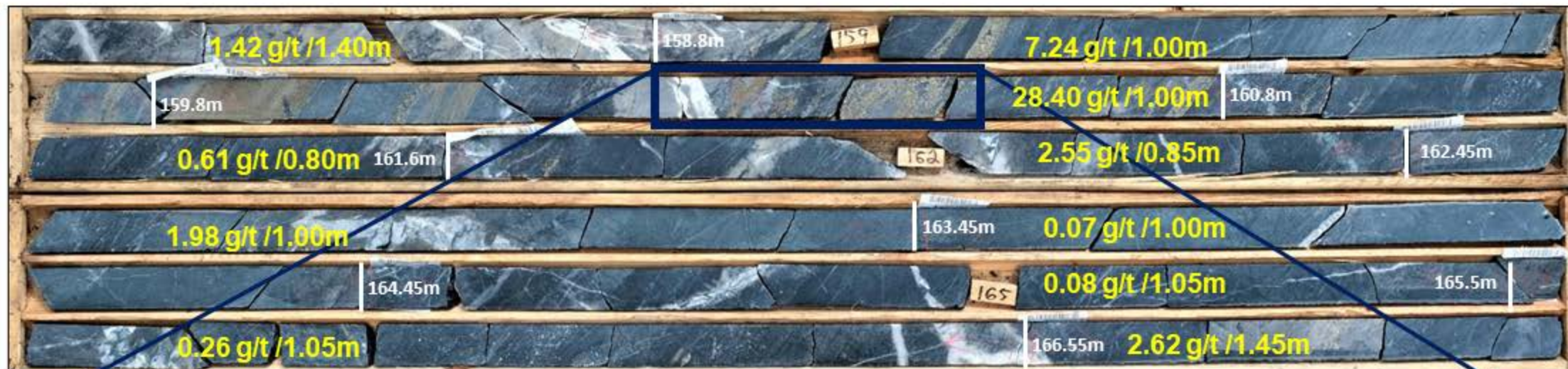


Patwon Cross Section Looking ~NE

3 – Selected Core Intersections from Elmer 2020 Drilling Program

Hole **ELM20-028:**
1/1 (158m to 167m)

160.4m to 160.6m : Close up showing pyrite stringers parallel to foliation, pervasive silica-sericite alteration at quartz-calcite veins selvages, with native gold grains.

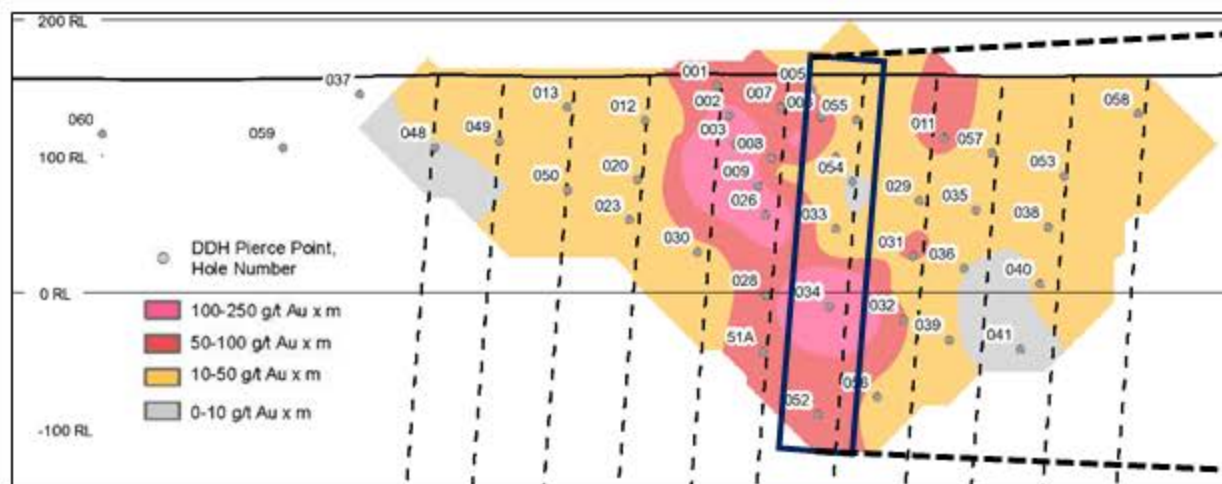
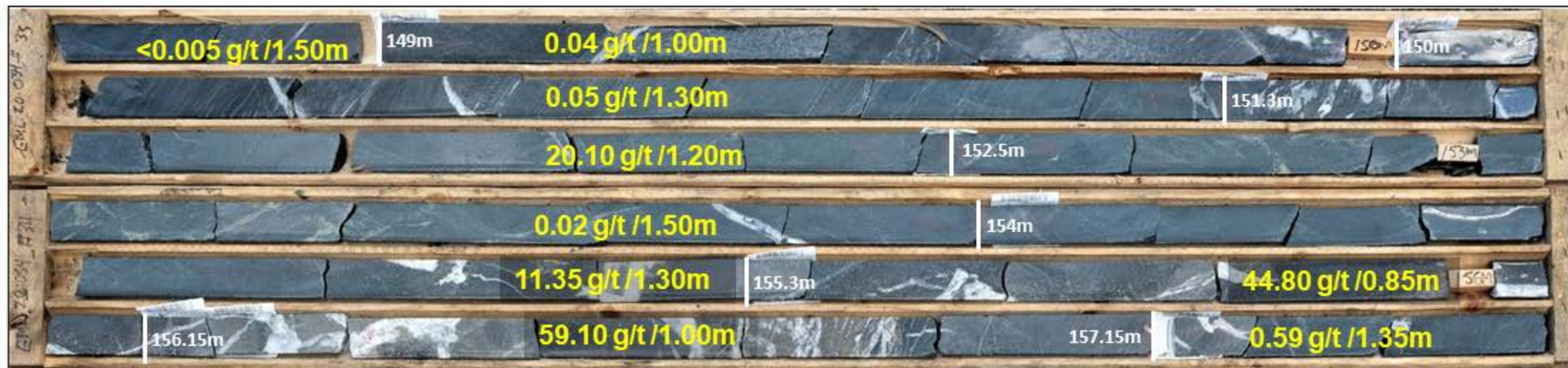


3 – Selected Core Intersections from Elmer 2020 Drilling Program



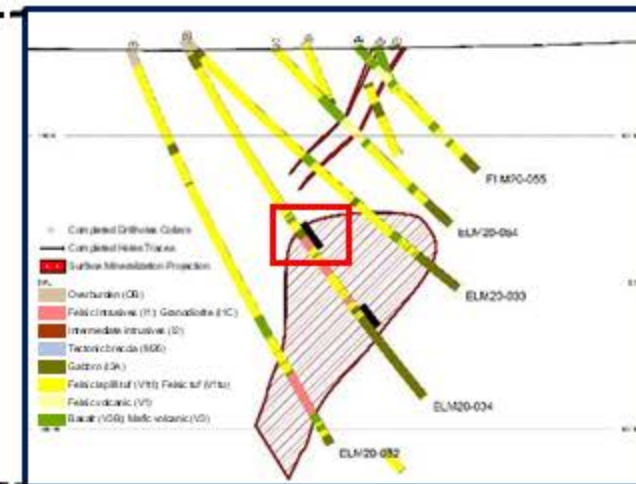
Hole **ELM20-034:**
1/3 (149m to 158m)

3.01 g/t Au / 90.20m (151.30m to 241.50m)
including 10.99 g/t Au / 18.70m (151.30m to 170.00m)



Patwon Discovery Longitudinal Section Looking ~NNW

The distance between two horizontal lines is 100m.

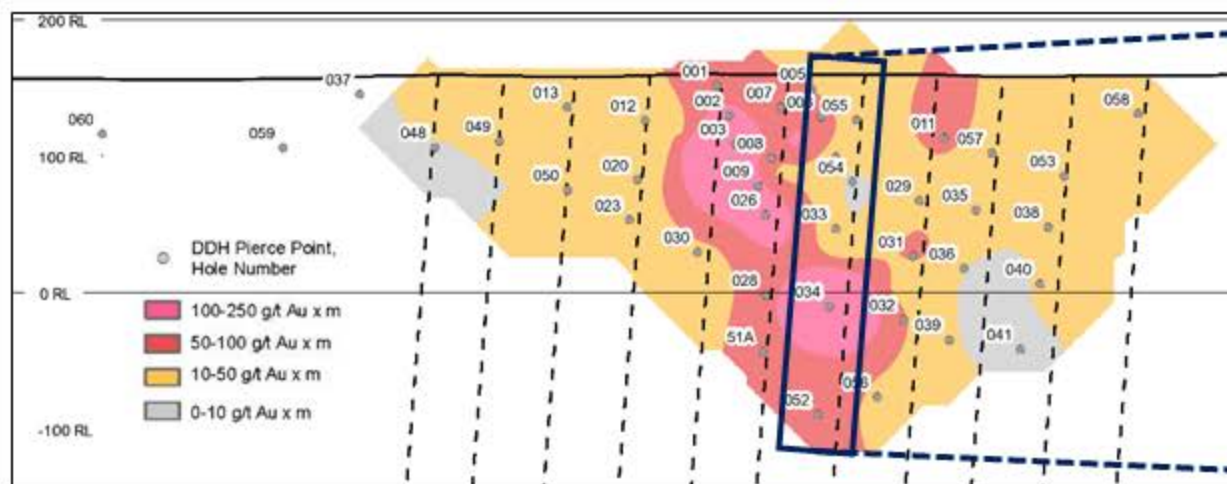
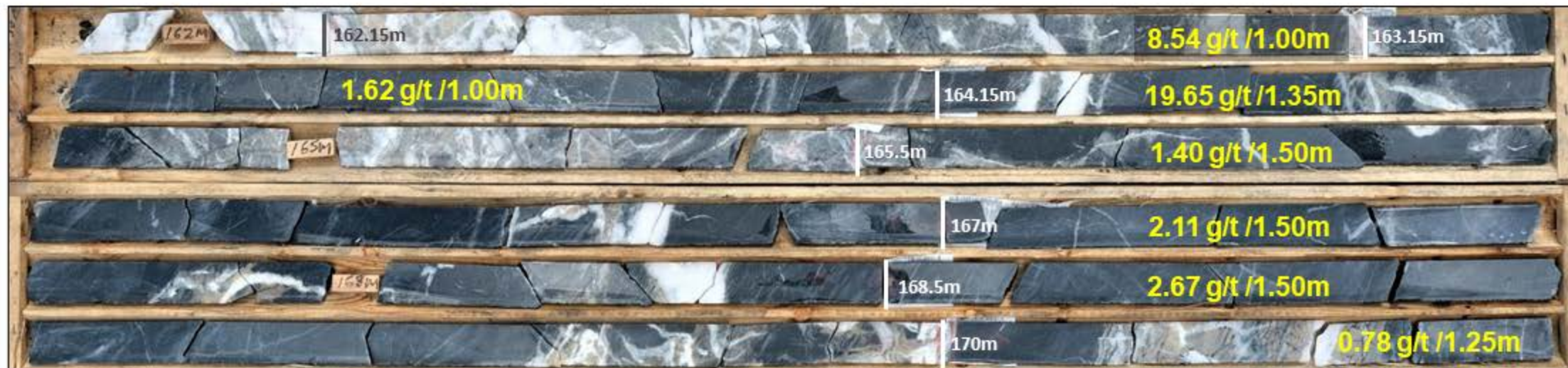


Patwon Cross Section Looking ~NE

3 – Selected Core Intersections from Elmer 2020 Drilling Program

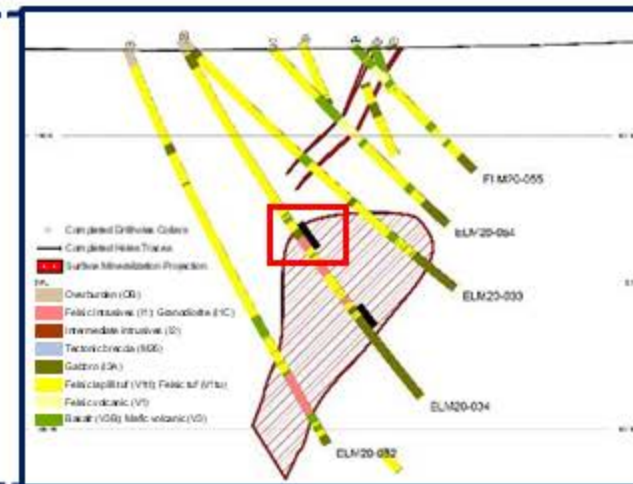
Hole **ELM20-034:**
2/3 (162m to 171m)

3.01 g/t Au / 90.20m (151.30m to 241.50m)
including 10.99 g/t Au / 18.70m (151.30m to 170.00m)



Patwon Discovery Longitudinal Section Looking ~NNW

The distance between two horizontal lines is 100m.

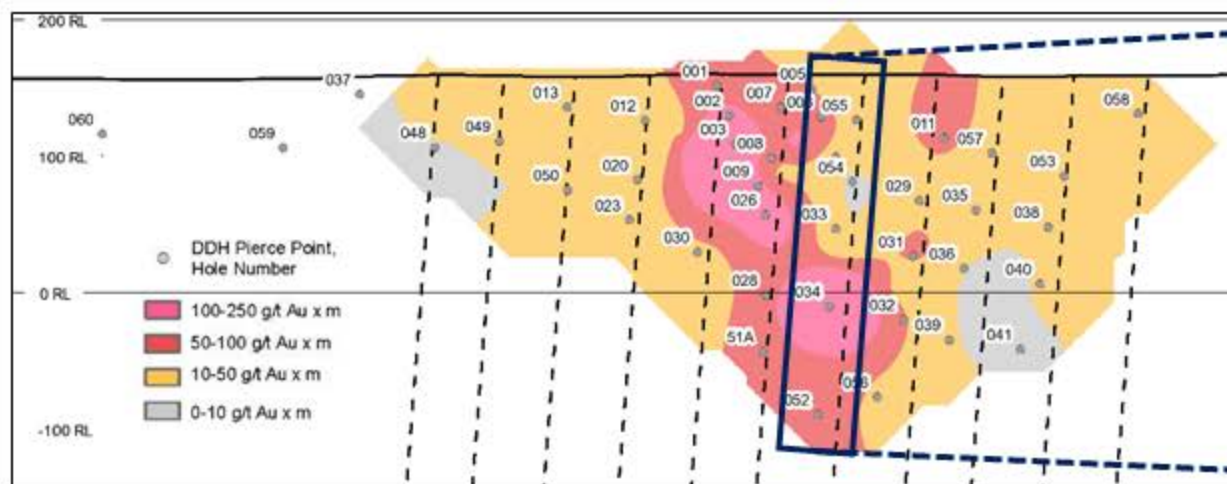
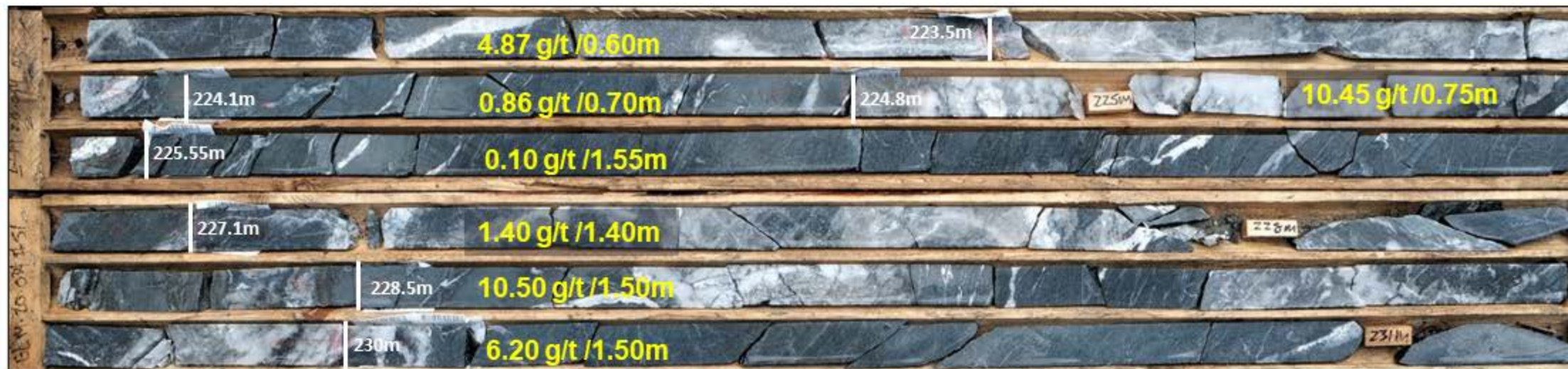


Patwon Cross Section Looking ~NE

3 – Selected Core Intersections from Elmer 2020 Drilling Program

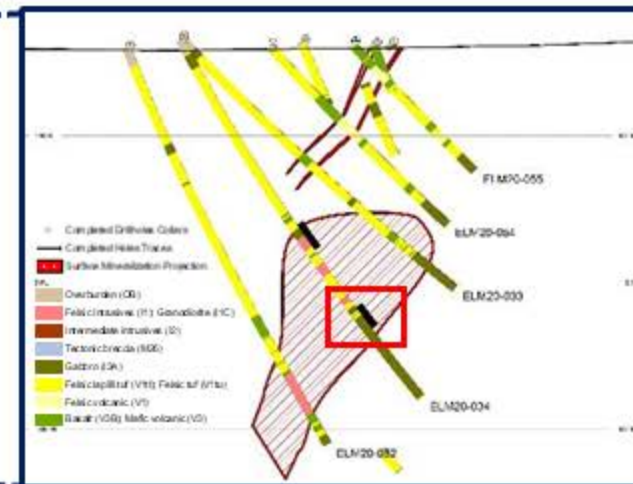
Hole **ELM20-034:**
3/3 (223m to 231m)

3.01 g/t Au / 90.20m (151.30m to 241.50m)
including 10.99 g/t Au / 18.70m (151.30m to 170.00m)



Patwon Discovery Longitudinal Section Looking ~NNW

The distance between two horizontal lines is 100m.



Patwon Cross Section Looking ~NE